

Tunneling

Below you will find how you can setup a tunnel from your Home Windows Desktop (or laptop) to your personal desktop or to access your Lab computer to see the data acquisition running in the Lab.

P.S. On the Windows computers SMG needs to create an account in the remote desktop user list. Please record your computer name and extend this with the domeinnaam before you are going to try the access from home, this information is recorded on the computer itself. E.g. (smg01.physics.leidenuniv.nl). Mail this information, including your account name, to helpdesk@physics.leidenuniv.nl.

Use or install VNC (Virtual Network Computing) on your lab computer if it is running Linux/Unix.

How to setup the tunneling from home:

1. Get the most recent version of the sftp program “Tunnelier” from: <https://www.bitvise.com/ssh-client-download>
2. Install Tunnelier using an account with administrator rights (if you have not setup this as a separated account, you have administrator rights on your computer by default).
3. Start tunnelier
4. Go to tab “Login” and modify the content according to **fig. 1**
5. Enter as “Username” your standard Physics username
6. Change “Initial Method” from Password default to None.
7. Enter your password in the “Password” field
8. Check the box for “Store encrypted password in profile”
9. Go to tab “Options and Terminal” and modify the content according to **fig. 2**
10. Uncheck the check box for “Open Terminal” and “Open SFTP”.
11. Go to tab “Remote Desktop” and modify the content according to **fig.3**
12. Enter the name of your personal Desktop or lab computer at work into “Target Server” e.g. (SMG01.Physics.LeidenUniv.nl). **This is possible only after SMG has created a special account for you on the work desktop/lab computer.**
13. After all this save the configuration by clicking the icon “Save profile” at the left side.
14. Test this profile by closing and restarting Tunnelier and load the saves profile.
15. Now you can connect to your personal Windows Desktop of Lab computer at work by clicking the “Open New Remote desktop” icon on the left side. **fig. 4**

Fig. 1

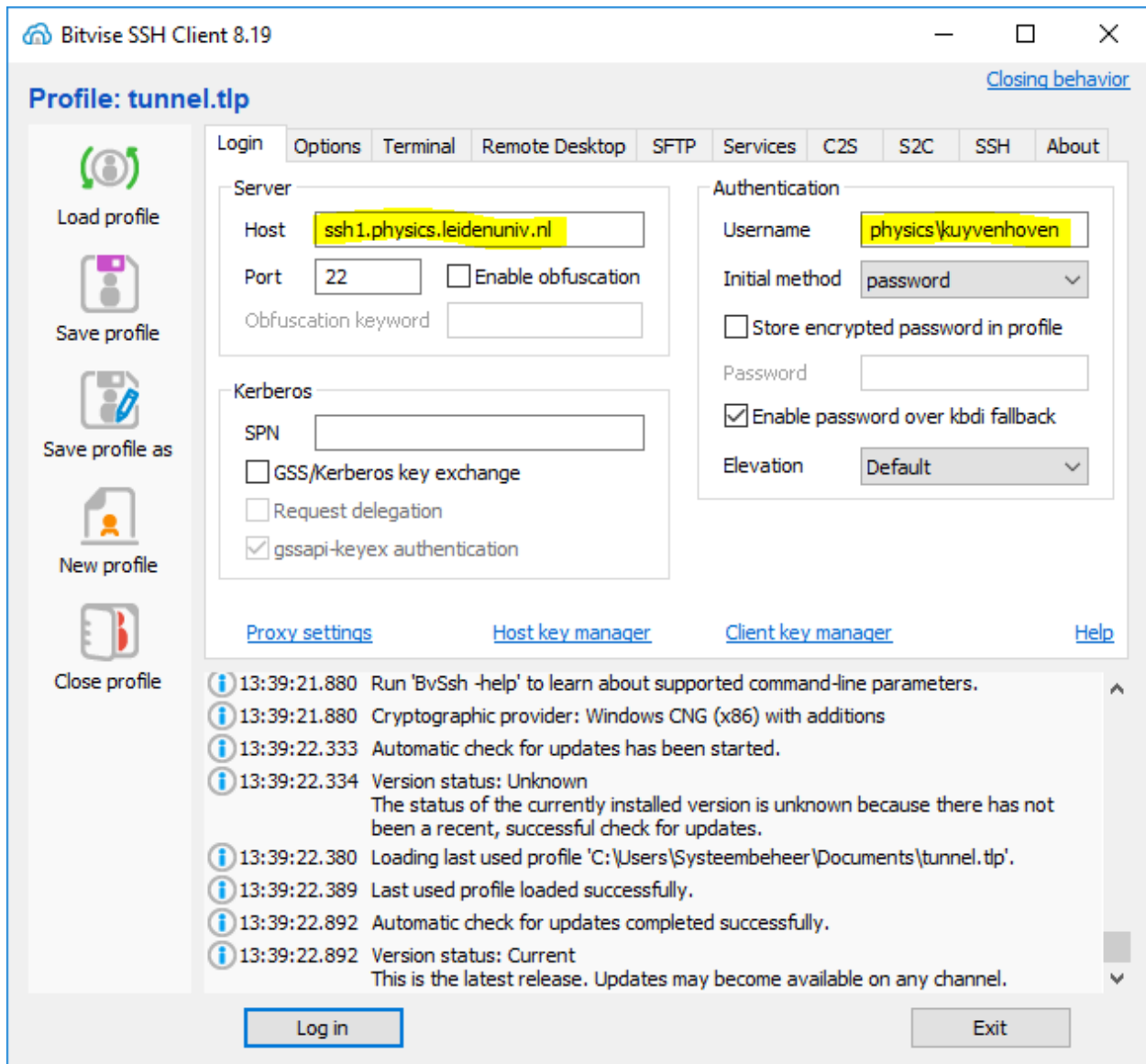


Fig.2

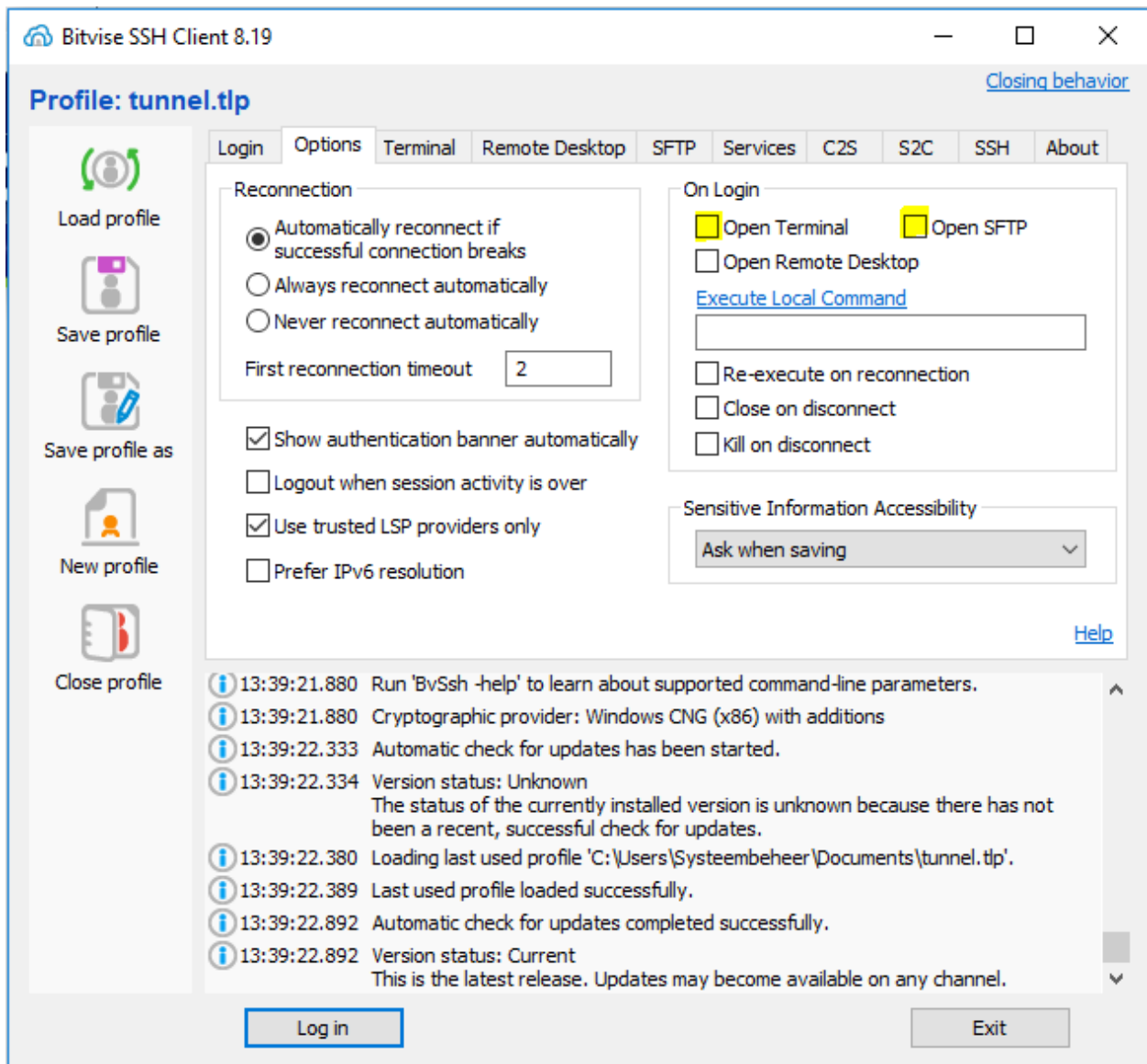


Fig. 3

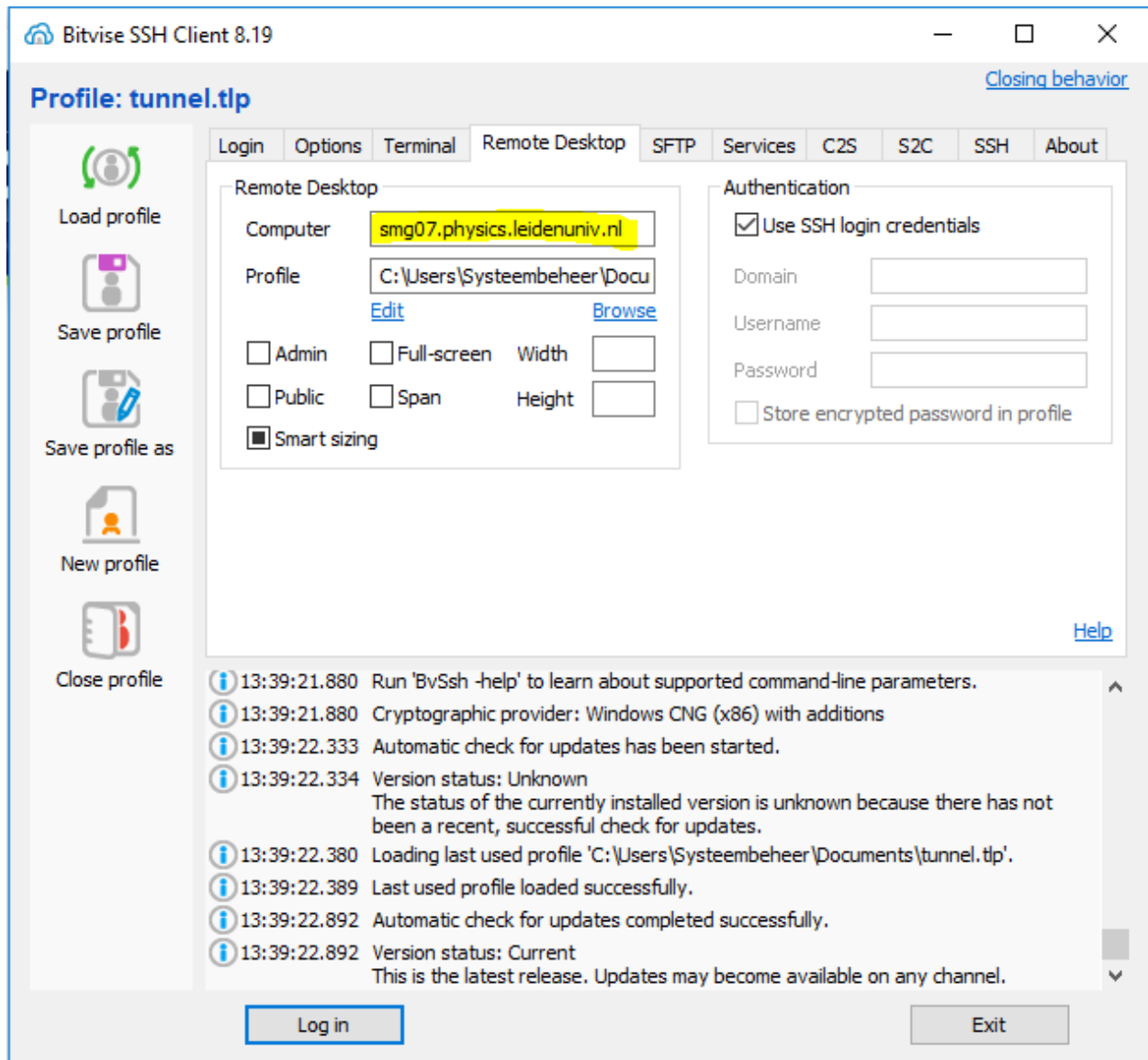
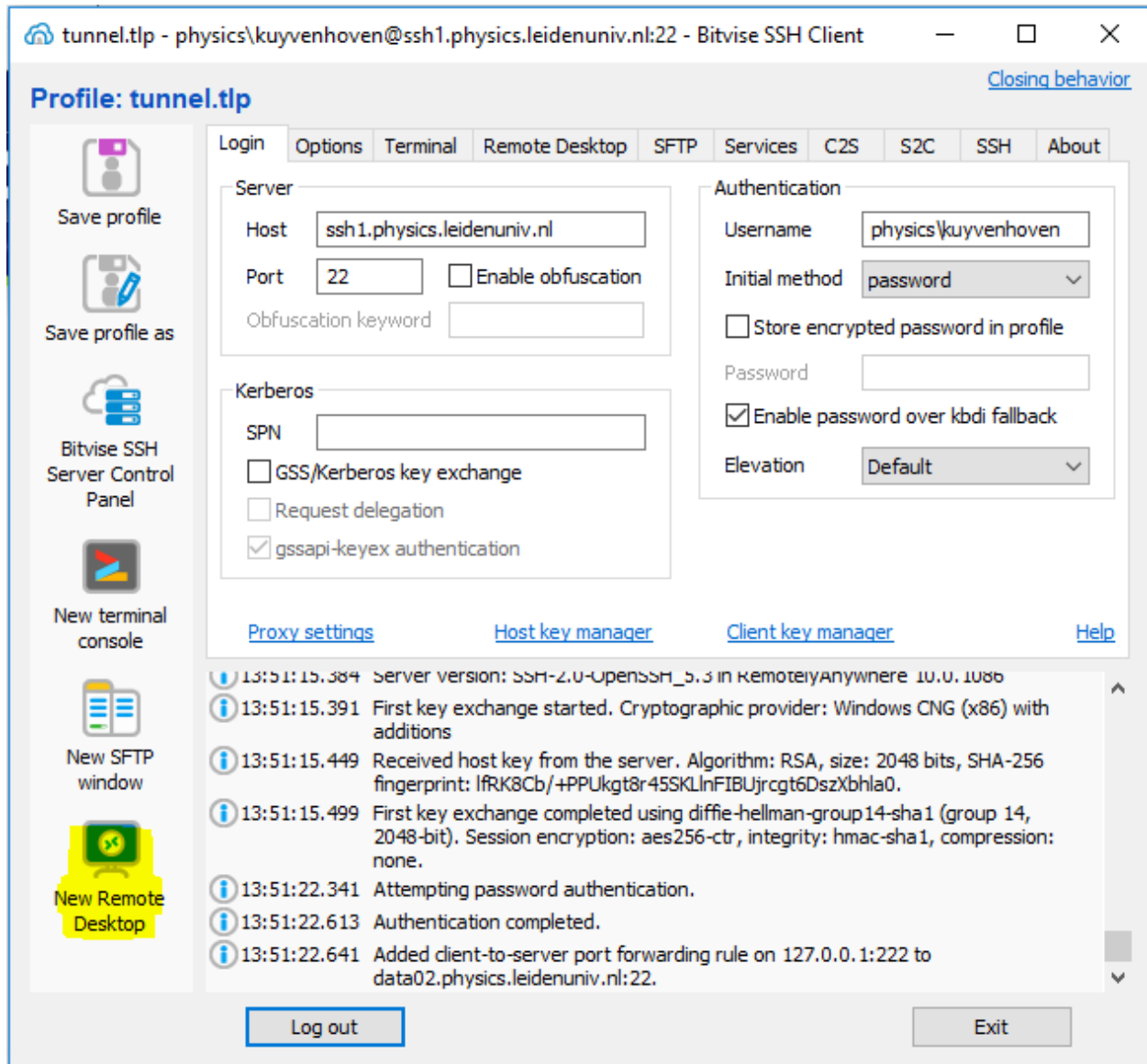
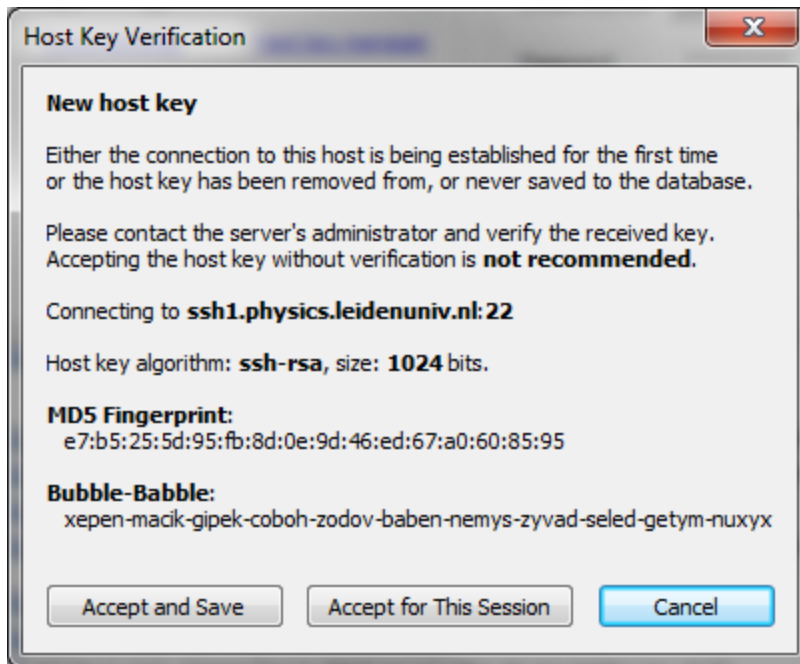


Fig.4





Accept and Save