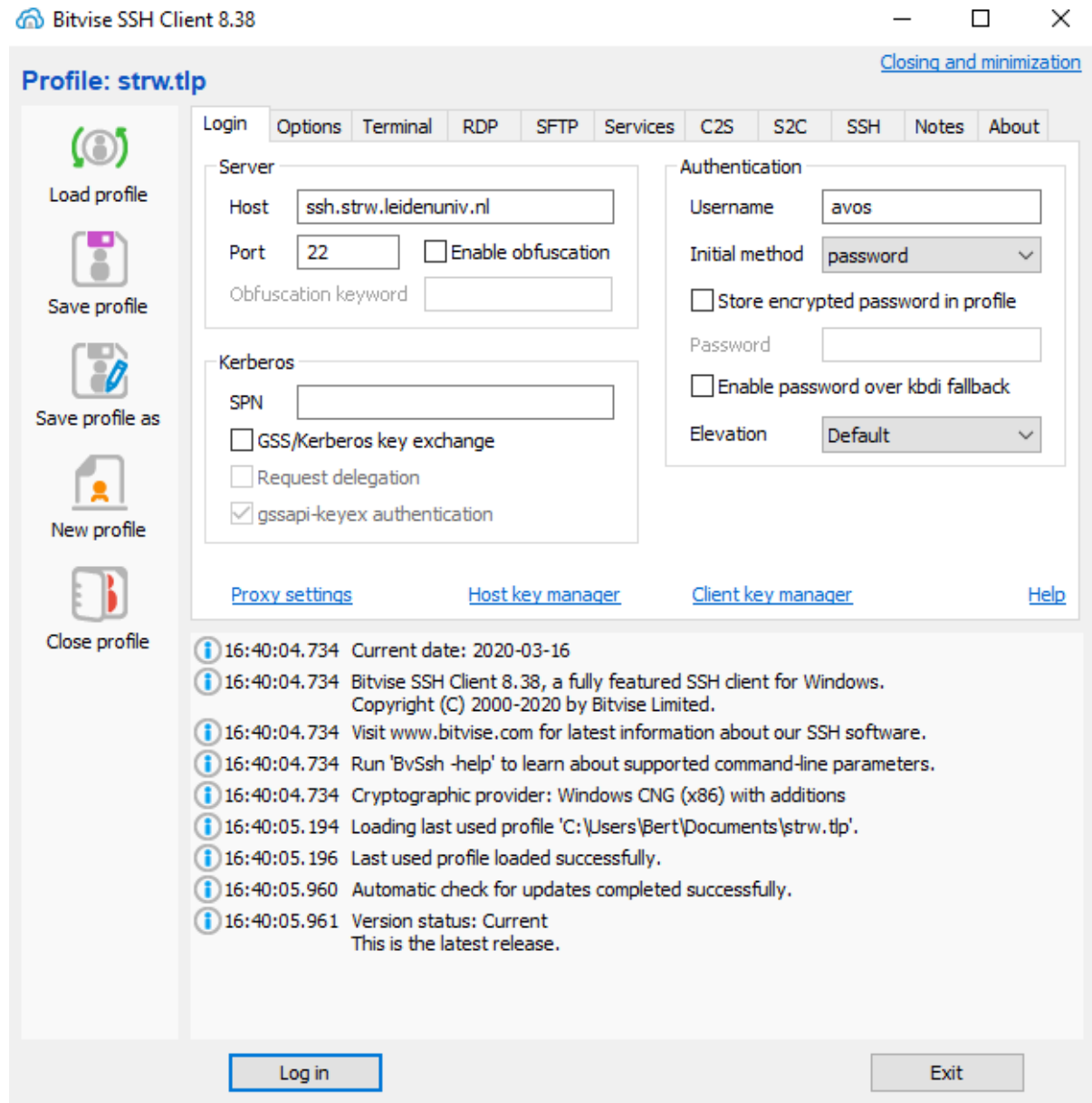


Download and install the bitvise client installer:

<https://www.bitvise.com/ssh-client-download>

Start the program and fill in the following information, where avos of course should read your own username



On the tab options choose remote desktop:

Bitvise SSH Client 8.38 — □ ×

[Closing and minimization](#)

Profile: strw.tlp (changed)

Login Options Terminal RDP SFTP Services C2S S2C SSH Notes About

Reconnection

Automatically reconnect if successful connection breaks
 Always reconnect automatically
 Never reconnect automatically

First reconnection timeout

Show authentication banner automatically
 Logout when session activity is over
 Use trusted LSP providers only
 Prefer IPv6 resolution

On Login

Open Terminal Open SFTP
 Open Remote Desktop

[Execute Local Command](#)

Re-execute on reconnection
 Close on disconnect
 Kill on disconnect

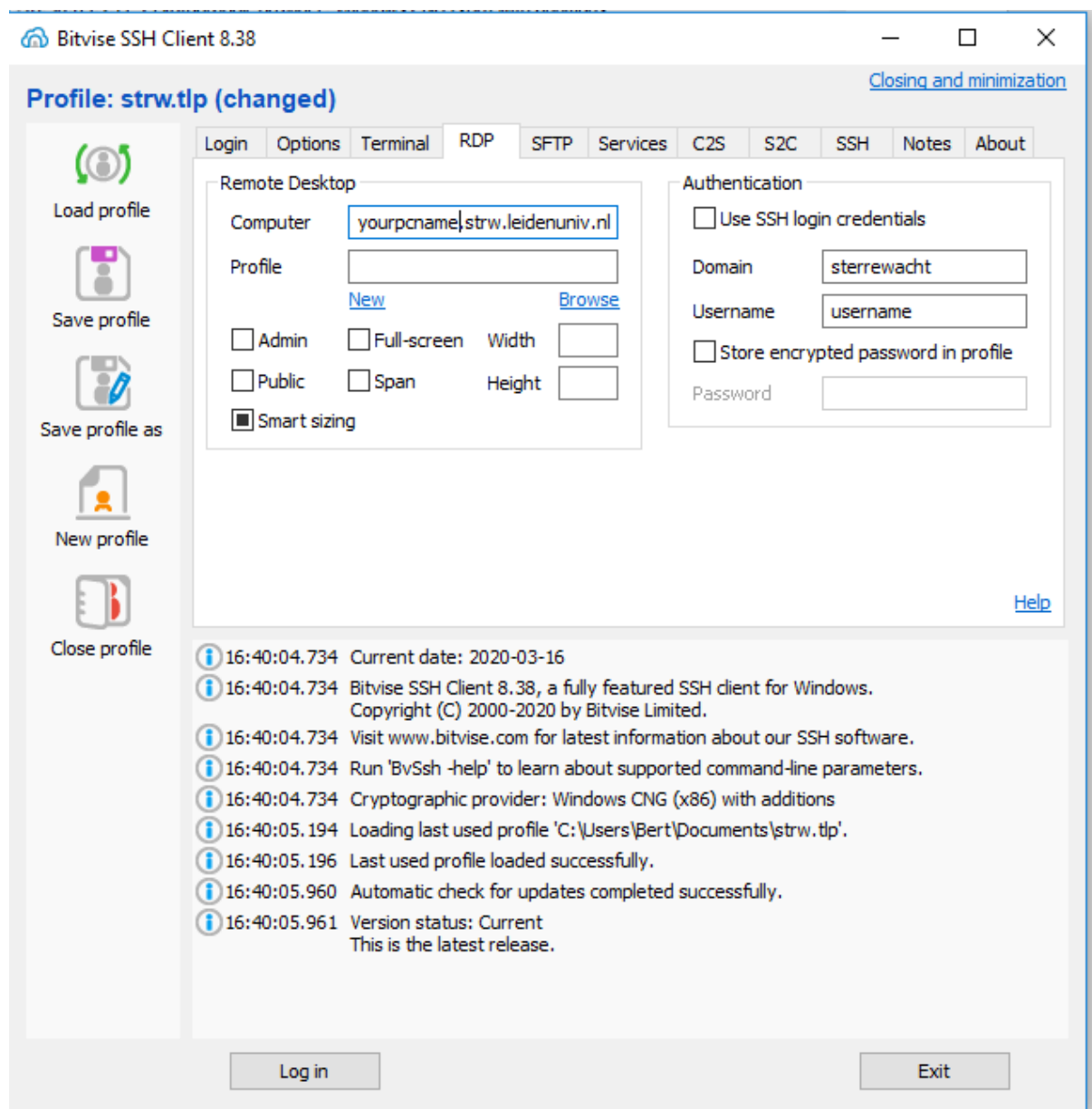
Sensitive Information Accessibility

Ask when saving

[Help](#)

16:40:04.734 Current date: 2020-03-16
16:40:04.734 Bitvise SSH Client 8.38, a fully featured SSH client for Windows.
Copyright (C) 2000-2020 by Bitvise Limited.
16:40:04.734 Visit www.bitvise.com for latest information about our SSH software.
16:40:04.734 Run 'BvSsh -help' to learn about supported command-line parameters.
16:40:04.734 Cryptographic provider: Windows CNG (x86) with additions
16:40:05.194 Loading last used profile 'C:\Users\Bert\Documents\strw.tlp'.
16:40:05.196 Last used profile loaded successfully.
16:40:05.960 Automatic check for updates completed successfully.
16:40:05.961 Version status: Current
This is the latest release.

On the tab remote RDP put the name of the machine and your credentials



You can now save as the profile and give it a name, or just choose save.